

# The Quest to Find *Trissolcus japonicus* in California



Ricky Lara<sup>1</sup>, Charlie Pickett<sup>1</sup> & Mark Hoddle<sup>2</sup>

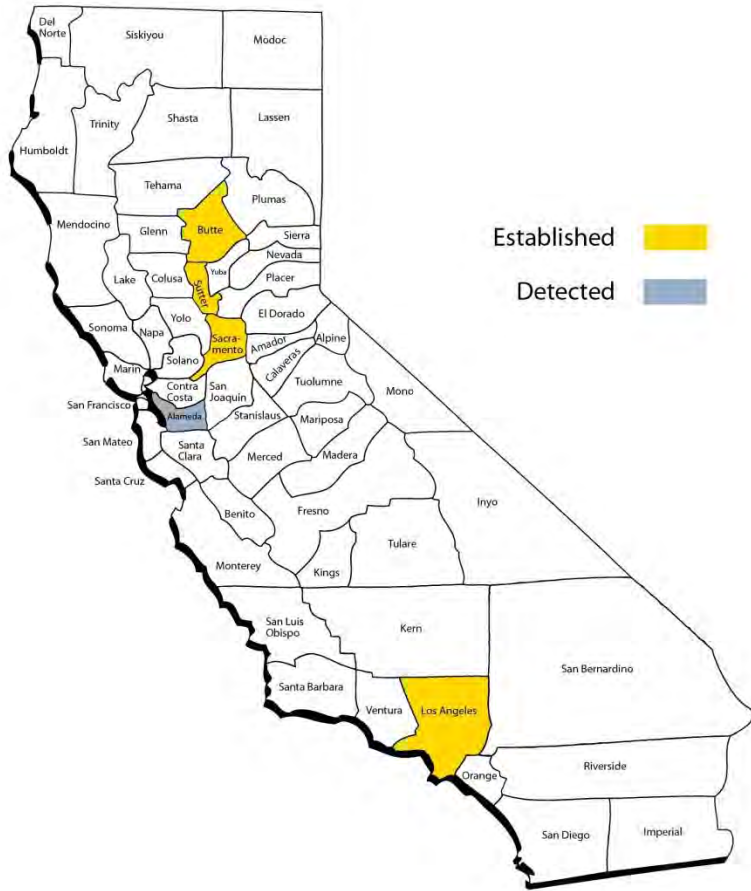
<sup>1</sup>CA Department of Food and Agriculture

<sup>2</sup>University of California, Riverside

February 2020

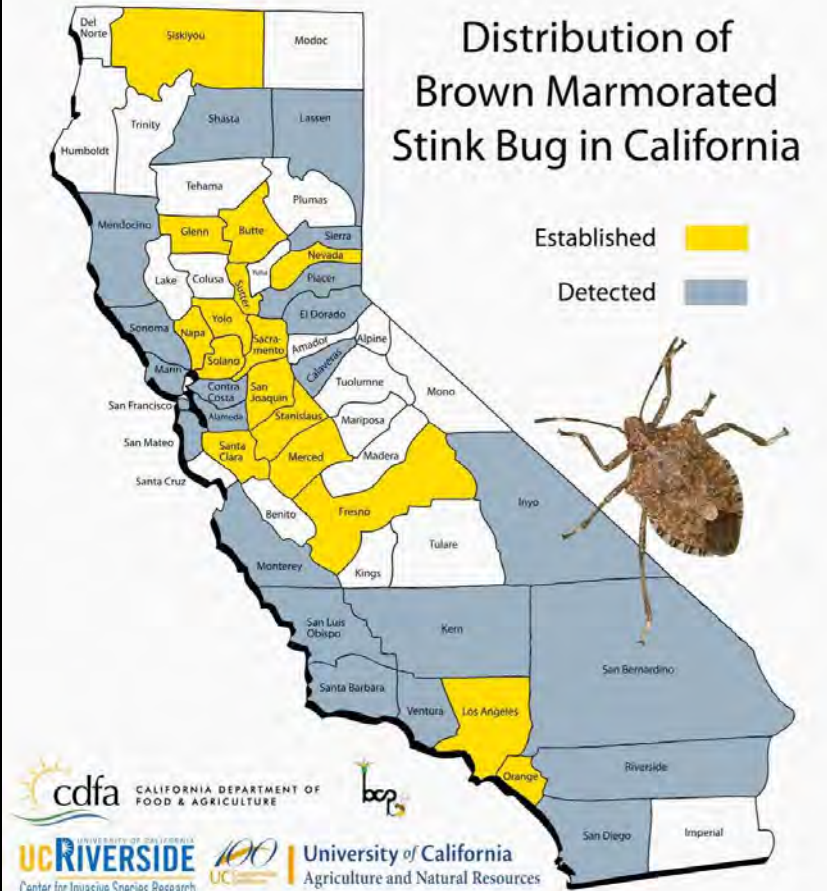
# Why Monitoring Matters!

2013



Established in 4, detected in 1

2020



Established in 16, detected in 22

BMSB continues to spread within CA.

This has generated problems in the San Joaquin Valley.

Effective natural enemies are needed!

# What about resident egg parasitoids?

- Deployment of >20,000 sentinel BMSB eggs (frozen)
- Recovered several stink bug egg parasitoids: *T. brochymenae*, *T. euschisti*, *Anastatus* sp.
- As a group do these show promise for BMSB control? Field results and lab studies?



M. Roche

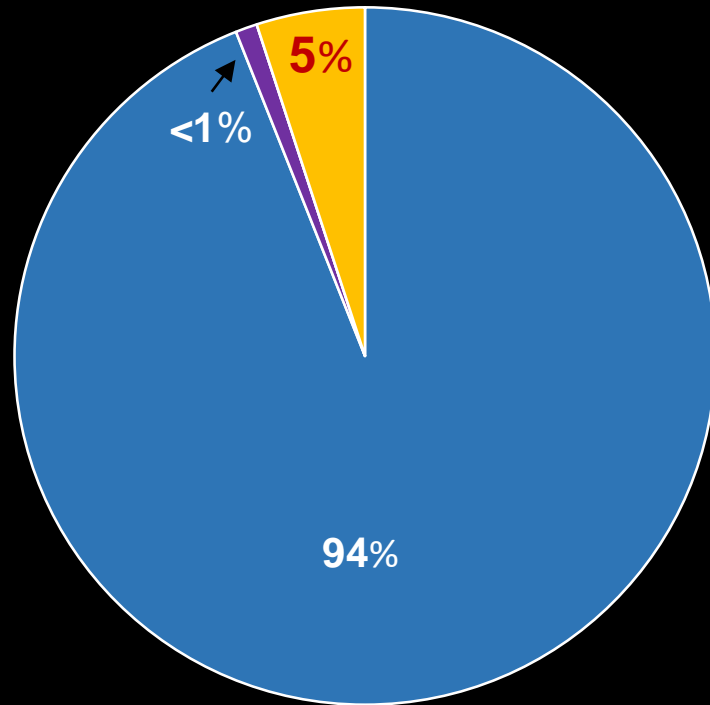


S. Triapitsyn



# LA County Sentinel Cards\*

2015

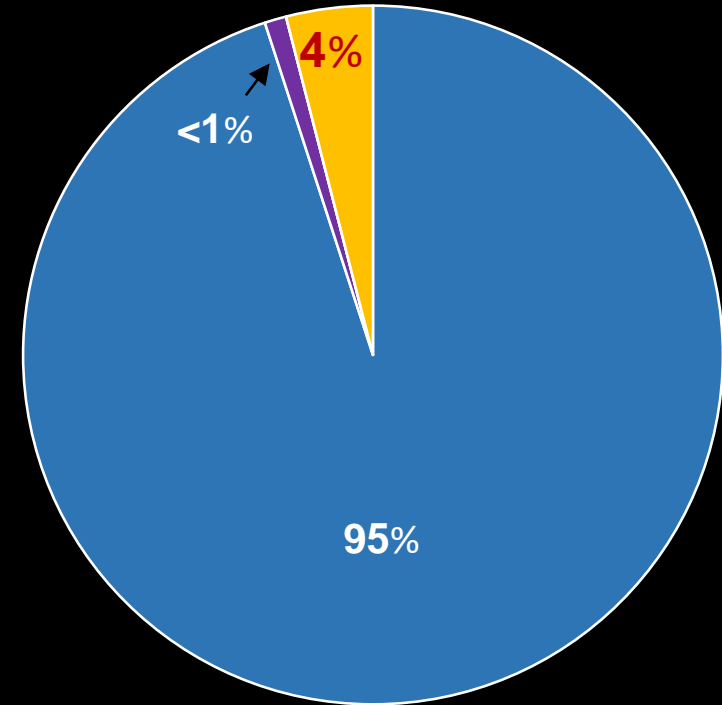


N=5174 eggs

■ Unemerged ■ Chewed ■ Piercing/Sucking ■ Parasitized

Low Parasitism

2016



N=5319 eggs

■ Unemerged ■ Chewed ■ Piercing/Sucking ■ Parasitized

Low Parasitism

\*June to October

# What about *Trissolcus japonicus*?

1. Is TJ in California yet?
2. Are we rearing it?
3. Will TJ establish in key parts of the state?
4. What are we doing now?

# 1. Adventive arrival of TJ (2018)



TJ detection in SoCal



ID confirmed by E. Talamas

## 2. We're still in the Game!

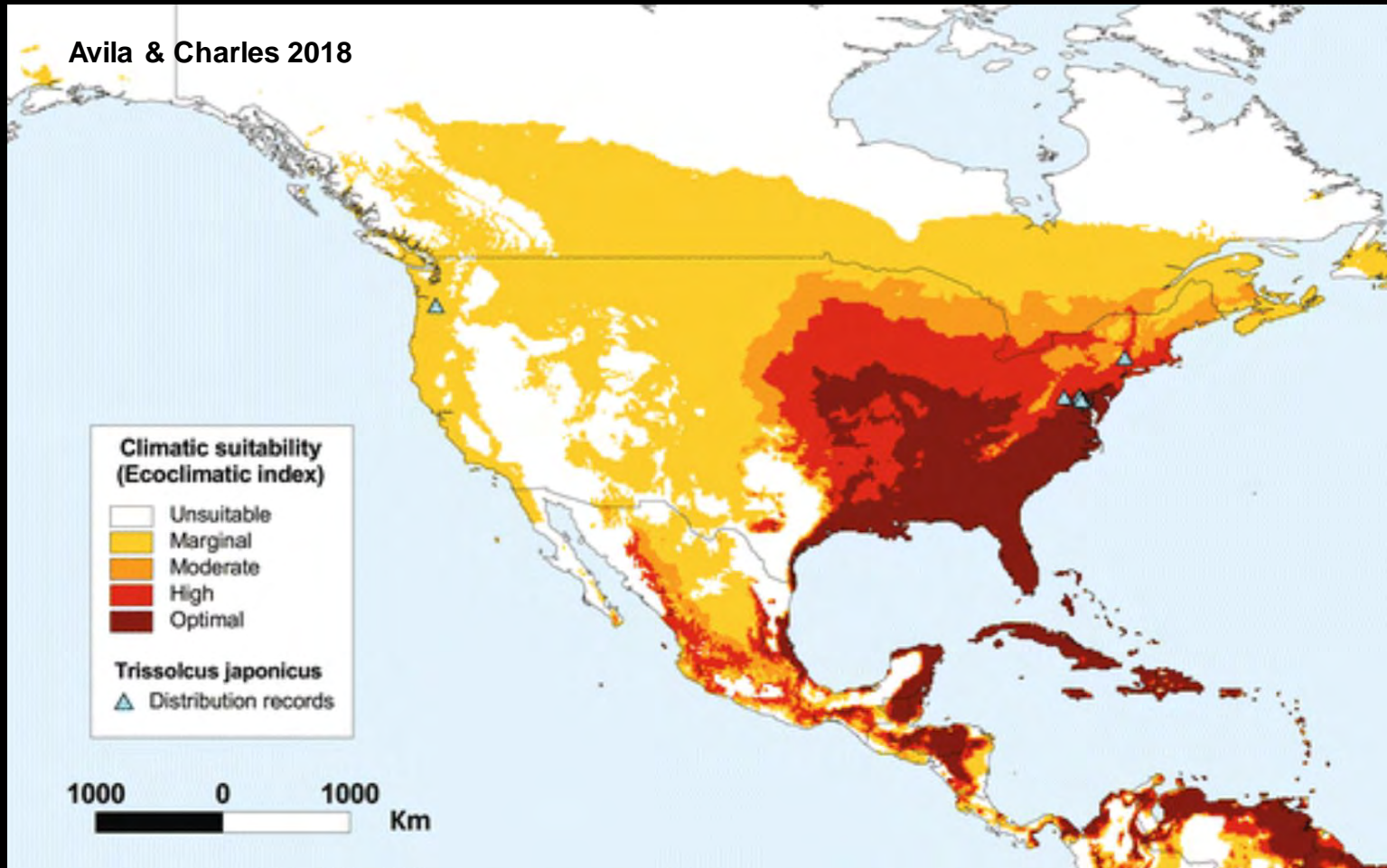


Parasitized egg masses from detection sites

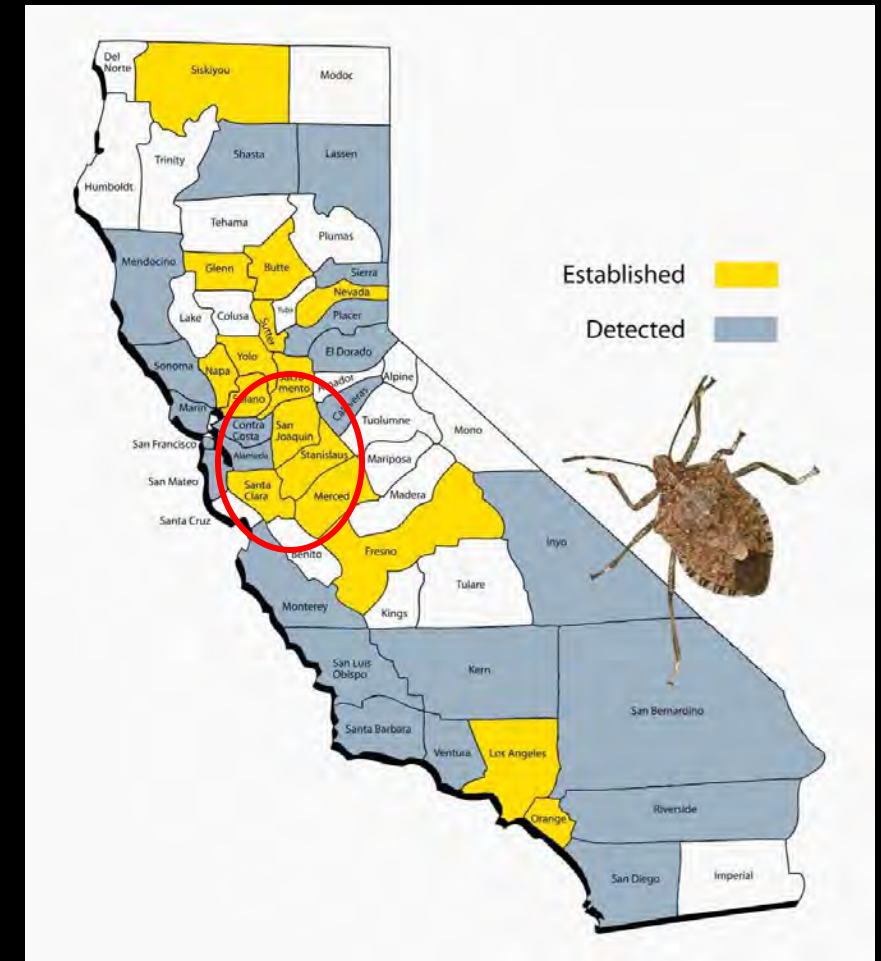


Parasitoid screening (resident species)

# 3. Can TJ establish in California?



Marginal suitability on the West Coast (?)



San Joaquin Valley





# Thanks to the following collaborators:

Jhalendra Rijal (UCCE)

Gene Hannon (Fresno)

Brian Brown (NHM)

Lisa Gonzalez (NHM)

Kim Hoelmer (USDA-ARS)

Bob Klein (CPRB)

Justin Nay (Integral Ag., Inc.)

Michael Calacsan (CDFA)

Phoebe Gordon (UCCE)

Janet Cangemi (UCCE)

Barbara Johnson (UCCE)

Christopher Borkent (CDFA)

Caron Bornstein (NHM)

Daniel Feldman (NHM)

Kathy Tatman (USDA-ARS)

Viola Popescu (CDFA)

Frank McDonough (LA Arbo.)

Jim Henrich (LA Arbo.)

Mike Lewis (UCR)

Ruth Amrich (UCR)

Manuel Jimenez (BLBG)

Dani Lightle (UCCE)

Thank you!

